

*The All New*  
**ORIGINALPK™**

**PK300™**



**ASSEMBLY INSTRUCTIONS**

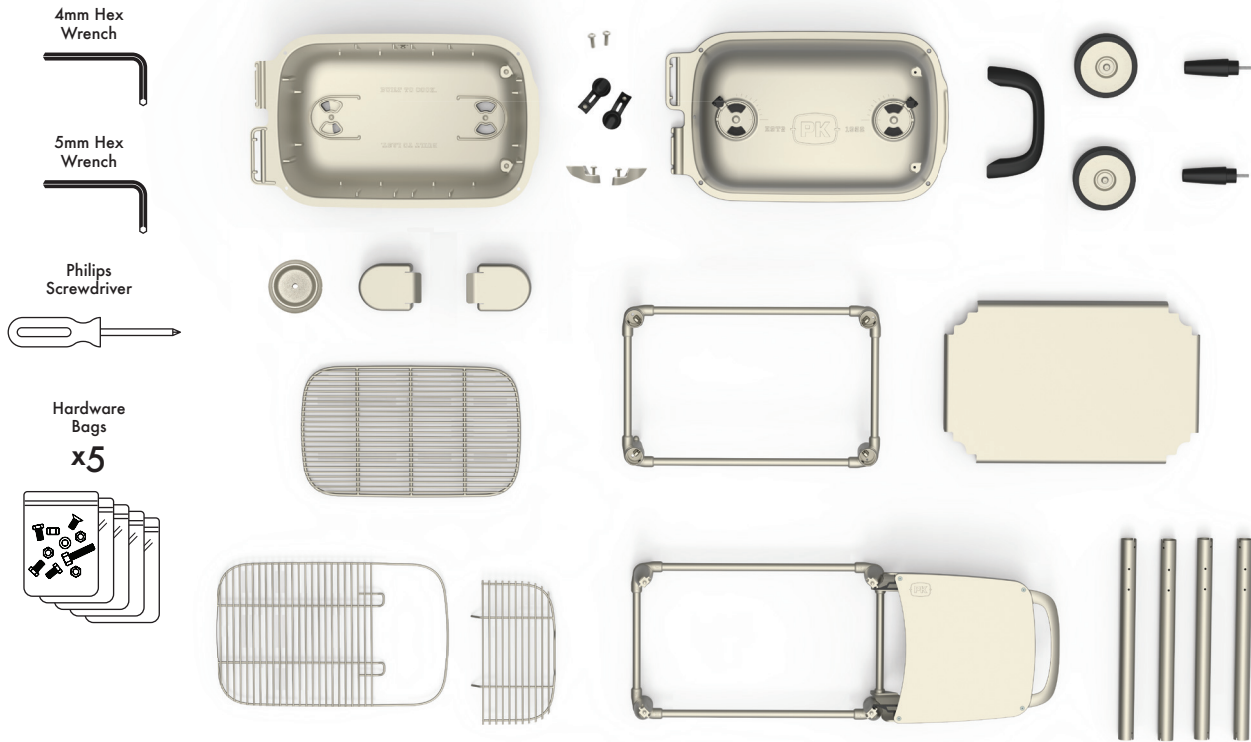


## GETTING READY

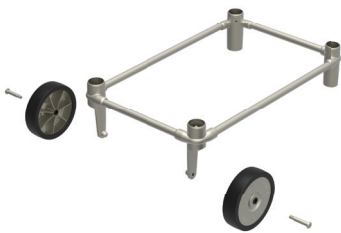
Carefully unpack all components.

Tools needed: phillips #3 screwdriver, 4 mm hex wrench, 5 mm hex wrench

[www.pkgrills.com/assemblyvideos](http://www.pkgrills.com/assemblyvideos)



## ASSEMBLE CART



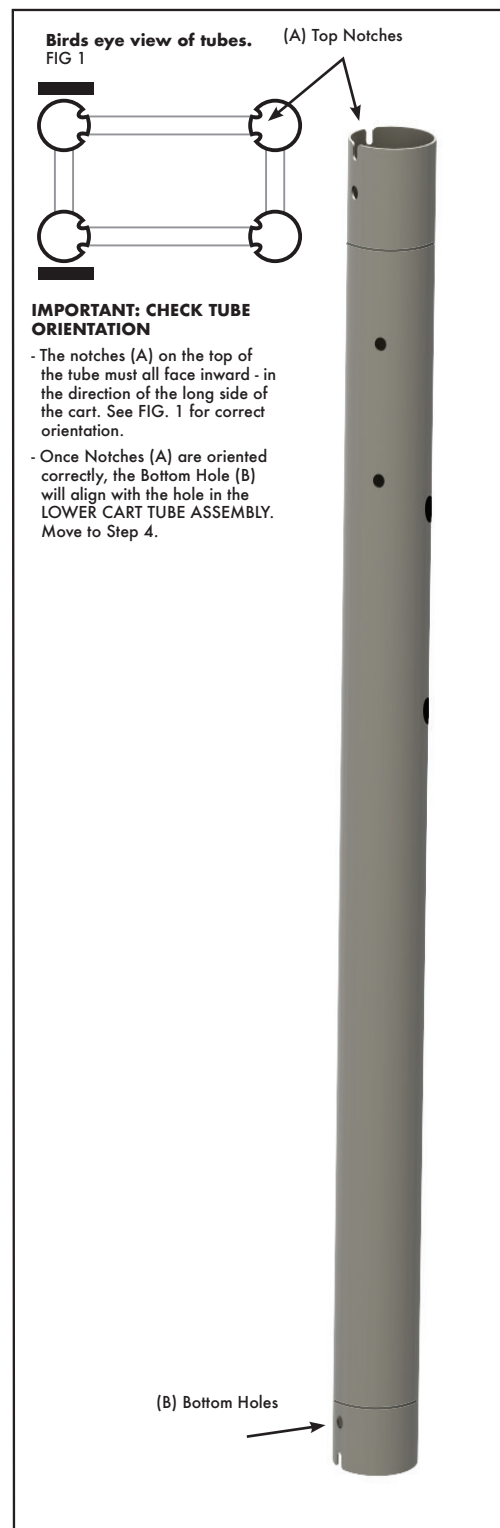
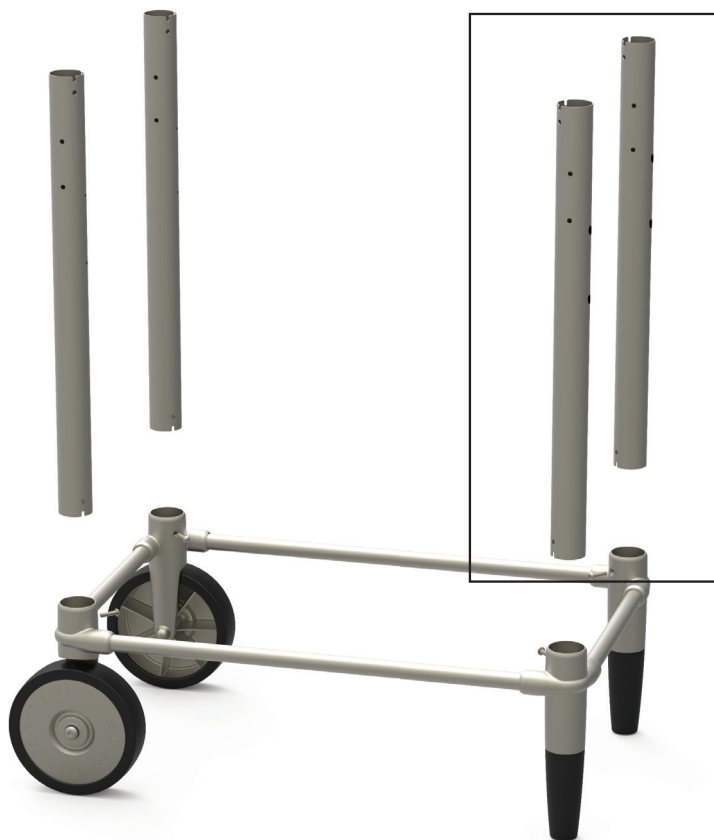
**STEP 1.** Affix wheels to LOWER CART TUBE ASSEMBLY using two axle screws (hardware bag A).



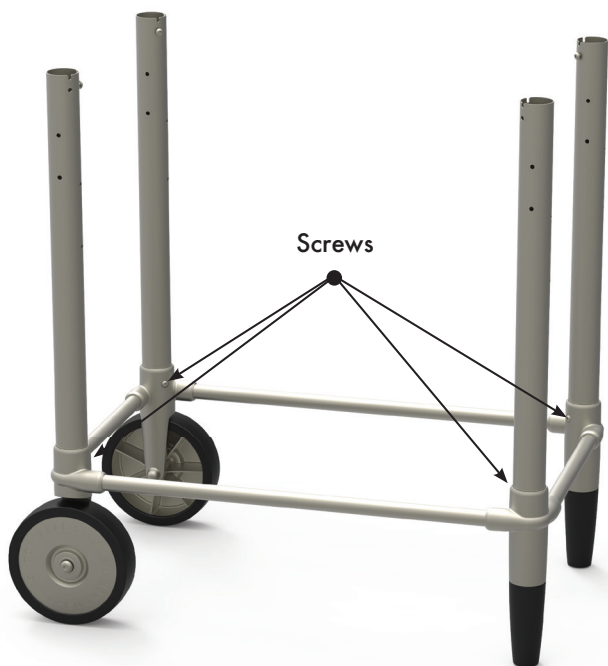
**STEP 2.** Screw two adjustable rubber feet into LOWER CART TUBE ASSEMBLY by rotating clockwise.



**Pro Tip:** Once installed, these feet are adjustable for use on uneven ground by rotating them.



**STEP 3.** Place four VERTICAL TUBES into the corner lugs of LOWER CART TUBE ASSEMBLY. See Diagram for proper orientation.



**STEP 4.** Affix VERTICAL TUBES to LOWER CART TUBE ASSEMBLY using provided hex screws (hardware bag B) and 4mm hex wrench. Do not fully tighten.



**STEP 5.** Place UPPER CART TUBE ASSEMBLY on top of the four VERTICAL TUBES as shown. The SHELF should be oriented on the side opposite the wheels.

Ensure the VERTICAL TUBES insert fully into the lugs of the UPPER CART TUBE ASSEMBLY carefully aligning the screw holes in the lugs with the holes in the tubes.



**STEP 6.** Affix VERTICAL TUBES to UPPER CART TUBE ASSEMBLY using provided hex screws (hardware bag B) and 4mm hex wrench. **Do not fully tighten hex screws at this step.**

**PRO TIP:** It may be necessary to wiggle the entire assembly slightly to ensure all the tubes are fully seated.



**STEP 7.** Put LOWER SHELF in place.

The assembled cart should look as shown here.

**If so, fully tighten the eight (8) hex screws into the cart lugs.**

## ASSEMBLE LOWER CAPSULE

---



**STEP 1a.** Attach SHELF LOCKS to LOWER CAPSULE oriented as shown using provided M6 screws and lock washers (hardware bag C).

**STEP 1b.** Attach VENT HANDLES to LOWER RADIAL VENTS using provided M6 screws (hardware bag D). Handles are identical, so work interchangeably with lower VENTS.



**STEP 2.** With the UPPER SHELF in the down position, place the LOWER CAPSULE on the cart with the hinge positioned over the wheels as shown. Note the four holes in the lip of the capsule. These holes align with the four top lugs on the UPPER CART ASSEMBLY to ensure proper orientation of the capsule.

**Pro Tip:** Rotate both the lower vents to the fully open position to get the handles out of the way and then lower the right side of the capsule onto the cart first, then lower the left side (hinge side) of the capsule.



**STEP 3.** When the LOWER CAPSULE is in place, rotate the shelf up into the locked position. This will lock the lower capsule onto the cart.

For future use, note that by squeezing the two UPPER SHELF LEVERS inward, you can lower the UPPER SHELF, which allows easy removal of the LOWER CAPSULE.



**STEP 4.** Put the two VENT COVERS in place inside the LOWER CAPSULE as shown.



**STEP 5.** Install the CHARCOAL GRATE and upper COOKING SURFACE as shown.



**STEP 6.** Place REMOVABLE COOKING SURFACE DOOR on right side. Note that the REMOVABLE COOKING SURFACE DOOR is designed to easily hinge upon and closed or to be completely removed for easy access to coals in indirect cooking scenarios.

**PRO TIP:**

Use the probe port at the back of the grill to thread digital thermometer cords to clip them on the grid closest to the meat and insert a probe to monitor the meat temperature.

## ASSEMBLE UPPER CAPSULE

---



**STEP 1.** Place the UPPER CAPSULE on the LOWER CAPSULE with hinge oriented as shown.



**STEP 2.** Open the UPPER CAPSULE into the open position and affix the handle using a Phillips head screwdriver and supplied screws and lock washers (hardware bag E) as shown. Securely tighten screws.

### PRO TIP:

The bolt at the end of the capsule can be removed to install a PK Tel Tru thermometer. The round disk included in the hardware can be installed between the thermometer dial and the casting for a refined look.





**[www.pkgrills.com/assemblyvideos](http://www.pkgrills.com/assemblyvideos)**

---

**STEP 3.** Take a picture. (It will never be this pretty again.) Fire it up.

**Step 4.** The PK grill doesn't require a burn in or seasoning for the castings. Just clean with soap and water and then oil the cooking grid and you're ready to cook!

**Step 5.** Register your grill at [pkgrills.com](http://pkgrills.com)